

DATA ACQUISITION PRODUCT- PC104

100KS/s 12-bit 32 channels Analog Input; 12-bit 4 channels

Analog Output

Analog Input

Number of Channels: 16SE/8DI

Resolution: 12 Bits

Sample Rate: 100KS/s

Voltage Range: -10~10V, -5~5V, 0~5V, 0~10V

Analog Output

Number of Channels: 4

Resolution: 12 Bits

Voltage Range: -10~10V, -5~5V, 0~5V, 0~10V

ART2000



ART2753

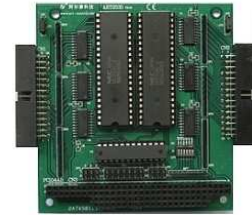
40MS/s/ch 16-bit 12 simultaneous analog inputs

Number of Channels: 12 SE

Resolution: 16 Bits

Sample Rate: 40MS/s

Voltage Range: -10~10V, -5~5V



ART2535

48 channels Digital I/O (TTL/DTL compatibility)

Digital I/O (TTL/DTL compatibility)

Number of Channels: 48DIO



ART2534

24 channels Digital I/O (TTL/DTL compatibility)

Digital I/O (TTL/DTL compatibility)

Number of Channels: 24DIO



Astra Elektronik Sanayi İthalat ve Ticaret Limited Şirketi

Postane Mahallesi Yalıbozu Caddesi No.50 Tuzla / İstanbul

Tel: +90 216 5740612/13/14/15 Faks: +90 216 5740616

e-mail: astra@astraelektronik.com GPS: N 40°49'10.7" E 29°17'29.2"

www.astraelektronik.com



DATA ACQUISITION PRODUCT- PC104

8 channels Isolation Digital Input; 8 channels Relay Output

Isolation Digital Input

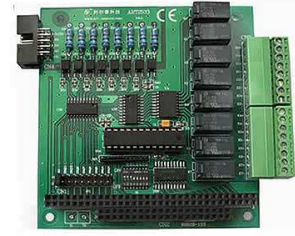
Number of Channels: 8DI

Input Type: Wet Contact (the same cathode)

Relay Output

Number of Channels: 8

Maximum Voltage and Current: 30V, 2A



ART2533

16 channels Isolation Digital Input; 16 channels Isolation Digital Output

Isolation Digital Input

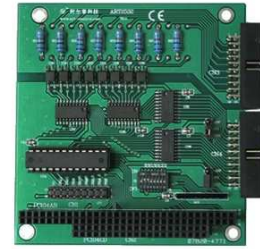
Number of Channels: 16DI

Input Type: Wet Contact (the same cathode)

Isolation Digital Output

Number of Channels: 16DO

Output Type: TTL level



ART2532

16 channels Isolation Digital Input; 16 channels Isolation Digital Output

Isolation Digital Input

Number of Channels: 16DI

Input Type: Wet Contact (the same cathode)

Isolation Digital Output

Number of Channels: 16DO

Output Type: Open Collector

Maximum Voltage and Current: 30V, 100mA



ART2531



Astra Elektronik Sanayi İthalat ve Ticaret Limited Şirketi

Postane Mahallesi Yalıboyu Caddesi No.50 Tuzla / İstanbul

Tel: +90 216 5740612/13/14/15 Faks: +90 216 5740616

e-mail: astra@astraelektronik.com GPS: N 40°49'10.7" E 29°17'29.2"

www.astraelektronik.com



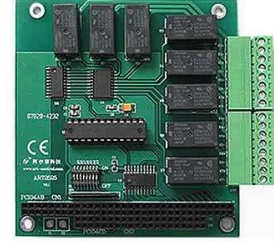
DATA ACQUISITION PRODUCT- PC104

8 channels Relay Output

Relay Output

Number of Channels: 8

Maximum Voltage and Current: 300, 2A



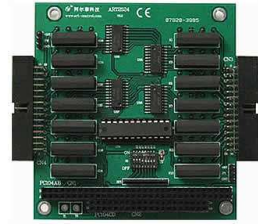
ART2525

28 channels Relay Output

Relay Output

Number of Channels: 28

Maximum Voltage and Current: 24, 1A



ART2524

16 channels Relay Output

Relay Output

Number of Channels: 16

Maximum Voltage and Current: 30V, 2A



ART2523

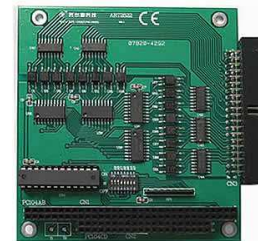
32 channels Isolation Digital Output

Isolation Digital Output

Number of Channels: 32

Output Type: Open Collector

Maximum Voltage and Current: 30V, 100mA



ART2522



Astra Elektronik Sanayi İthalat ve Ticaret Limited Şirketi

Postane Mahallesi Yalıboyyu Caddesi No.50 Tuzla / İstanbul

Tel: +90 216 5740612/13/14/15 Faks: +90 216 5740616

e-mail: astra@astraelektronik.com GPS: N 40°49'10.7" E 29°17'29.2"

www.astraelektronik.com



DATA ACQUISITION PRODUCT- PC104

16 channels Isolation Digital Output

Isolation Digital Output

Number of Channels: 16

Output Type: Open Collector

Maximum Voltage and Current: 30V, 100mA



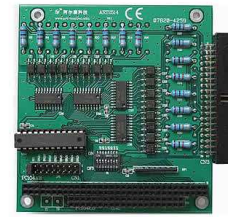
ART2521

32 channels Isolation Digital Input

Isolation Digital Input

Number of Channels: 32 DI

Input Type: Wet Contact (the same cathode)



ART2514

16 channels Isolation Digital Input

Isolation Digital Input

Number of Channels: 16 DI

Input Type: Dry/Wet Contact (the same anode)



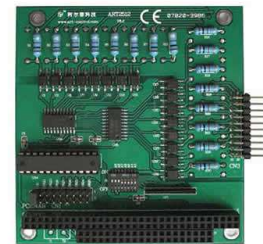
ART2513

16 channels Isolation Digital Input, high level(4~30V DC)

Isolation Digital Input

Number of Channels: 16 DI

Input Type: Wet Contact (the same anode and cathode)



ART2512



Astra Elektronik Sanayi İthalat ve Ticaret Limited Şirketi

Postane Mahallesi Yalıbozu Caddesi No.50 Tuzla / İstanbul

Tel: +90 216 5740612/13/14/15 Faks: +90 216 5740616

e-mail: astra@astraelektronik.com GPS: N 40°49'10.7" E 29°17'29.2"

www.astraelektronik.com



DATA ACQUISITION PRODUCT- PC104

16 channels Isolation Digital Input

Isolation Digital Input

Number of Channels: 16 DI

Over-voltage Protection: 70V



ART2511

250KS/s 16-bit 32 channels Analog Input

Analog Input

Number of Channels: 32SE/16DI

Resolution: 16 Bits

Sample Rate: 250KS/s

Programmable Gain: Yes

Buffer Storage: 8K FIFO Data Buffers



ART2153

100KS/s 12-bit 16 channels Analog Input; 24 channels Digital

Input/Output

Analog Input

Number of Channels: 16SE

Resolution: 12 Bits

Sample Rate: 100KS/s

Voltage Range: -10~10V, -5~5V, 0~10V

Programmable Digital I/O

Number of Channels: 24DIO



ART2010

12-bit 32 channels Analog Input

Analog Input

Number of Channels: 32SE/16DI

Resolution: 12 Bits

Voltage Range: -10~10V, -5~5V, -2.5~2.5V, 0~10V



ART2007



Astra Elektronik Sanayi İthalat ve Ticaret Limited Şirketi

Postane Mahallesi Yalıboyu Caddesi No.50 Tuzla / İstanbul

Tel: +90 216 5740612/13/14/15 Faks: +90 216 5740616

e-mail: astra@astraelektronik.com GPS: N 40°49'10.7" E 29°17'29.2"

www.astraelektronik.com



DATA ACQUISITION PRODUCT- PC104

12-bit 8 channels Analog Output

Analog Output

Number of Channels: 8

Resolution: 12 Bits

Voltage Range: -10~10V, -5~5V, 0~5V, 0~10V

DA setting time: 10us



ART2004

16-bit 4 channels high-speed isolation Analog Output

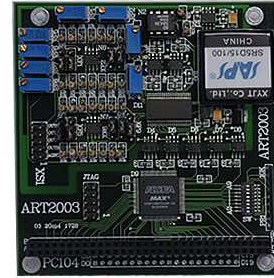
High-speed Isolation Analog Output

Number of Channels: 4

Resolution: 16 Bits

Sample Rate: 100KS/s

Voltage Range: -10~10V, -5~5V, 0~10V, 0~5V



ART2003

Analog Input

Number of Channels: 32

Sample Rate :100 KS/s

Resolution : 12 bits

Voltage Range :±10V, ±5V,0~10V

On-Board Memory :8 K



ART2005/A



Astra Elektronik Sanayi İthalat ve Ticaret Limited Şirketi

Postane Mahallesi Yalıboyu Caddesi No.50 Tuzla / İstanbul

Tel: +90 216 5740612/13/14/15 Faks: +90 216 5740616

e-mail: astra@astraelektronik.com GPS: N 40°49'10.7" E 29°17'29.2"

www.astraelektronik.com

